

PUBLIC AUCTION



LINCOLN GRAPHICS INC.

KOMORI 5 Colour Printing Facility

22 Export Avenue, St. Catharines, Ontario, Canada



KOMORI LITHRONE 40, MODEL L540, 5 COLOUR 28" X 40" PRINTING PRESS



POLAR MODEL 137 EMC, 54" GUILLOTINE



KOMORI LITHRONE 26, MODEL L-526-II, 5 COLOUR 20" X 26" PRINTING PRESS



CREO PLATE MAKER, MODEL CRS TRENDSETTER 3244 S

**Onsite & Online
Webcast**

Powered By BidSpotter.com

AUCTION: Tuesday December 13, 10:30 AM

Inspection: Monday December 12, 9 AM to 4 PM




INFINITY
Asset Solutions
infassets.com

AUCTIONS • LIQUIDATIONS

FINANCING • APPRAISALS

905.669.8893

 Like us at: facebook.com/Infinity-Asset-Solutions-Inc

 Follow us at: twitter.com/InfinityAssets

KOMORI & HEIDELBERG



1988 **KOMORI** LITHRONE 40, MODEL L540, 5 COLOUR 28" X 40" PRINTING PRESS



HEIDELBERG
KSBA LETTER /
CYLINDER PRESS,
18" X 22.5"



MULTILITH 11" X 17" OFFSET PRESS

PRINTING DEPARTMENT

1988 **KOMORI** Lithrone 40, Model L540, 5 Colour 28" x 40" Printing Press, 13,000 IPH, Electro Sprayer, Impressions: Counter Reads 81,517,790, Komori Stacker, PQC Console, Komorimatic Dampening, Tresu Refrigeration, Non Stop Feeder & Delivery, Pre-loader At Feeder, Powder Spray, Sheet Decurler, sn 303

1986 **KOMORI** Lithrone 26, Model L-526-II, 5 Colour 20" x 26" Printing Press, Impressions: Counter Reads 89,386,024, TOHO Spray Unit, PQC Console, Komorimatic Dampening, Tresu Refrigeration, Non-Stop Feeder & Delivery, Powder Spray, Sheet Decurler, KPS Plate Punch, IR Dryer, sn 164

1965 **HEIDELBERG** KSBA Letter / Cylinder Press, 18" x 22.5", Inker removed, Turned Into Die Cutting Machine & Creasing, Extra Chases Available, sn 316400

1978 **HEIDELBERG** Model GTO-46, Single Colour Printer, 12" x 18", 67 Million Impressions, GTO Plus, Numbering Unit, sn 662796

1962 **HEIDELBERG** T Platen, Letterpress Machine, 10" x 15", Print, Die-Cut, Number, sn 138022, Furniture For Letter Press Available

1970 **MULTILITH** 11" x 17" Offset Press, Currently Used For Envelopes, Roll, Thistle Dampening System

KOMORI KPS3 Printing Punch, 43" x 23" Bed (2) **X RITE** Spectrodensitometers, 500 Series

This brochure is only a partial listing. Please visit our websites at infassets.com for more detailed listings and photos.

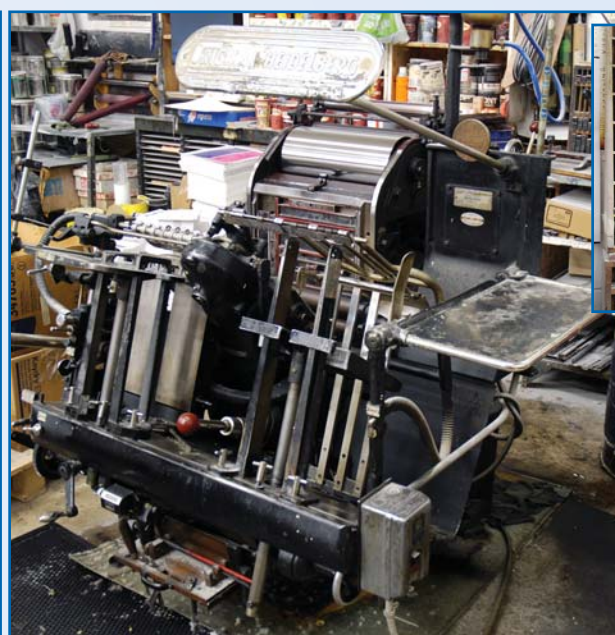
PRINTING DEPARTMENT



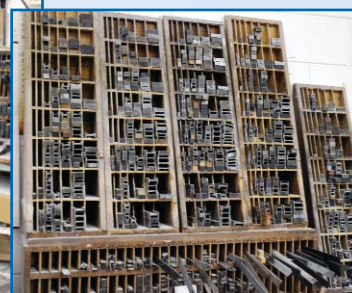
KOMORI LITHRONE 26, MODEL L-526-II, 5 COLOUR 20" X 26" PRINTING PRESS



HEIDELBERG MODEL GTO-46, SINGLE COLOUR PRINTER, 12" X 18"



HEIDELBERG T PLATEN, LETTERPRESS MACHINE, 10" X 15"



KOMORI KPS3 PRINTING PUNCH

POLAR GUILLOTINE & BINDERY



Chrome Bed

Hydraulic Pile Lift

POLAR MODEL 137 EMC, 54" GUILLOTINE



VIEW OF 2 BOSTITCH #7 STITCHERS



CHALLENGE MODEL EH3-A, 3 HEAD PAPER DRILL



HARRIS MACEY MULTIBINDER, MODEL 110A



CHALLENGE JF SINGLE HEAD DRILL



CMC ROUND CORNERING MACHINE



MBO MODEL T52-44, 20" FOLDER

GUILLOTINE

1984 **POLAR** Model 137 EMC, 54" Guillotine, Chrome Bed, Also Featuring: Hydraulic Pile Lift on Left Side, 86" Deep Bed, sn 5441240

BINDERY

HARRIS MACEY Multibinder, Model 110A, 9 Station, Stitching, Trimming, Folding, sn 184

1981 **MBO** Model T52-44, 20" Folder, Pile Feed, 8 Page Attachment, sn 81 086137

(2) **BOSTITCH** #7 Stitchers, 7/8" Capacity, sn's: 9053V, 8676V

CHALLENGE Model EH3-A, 3 Head Paper Drill, 20" x 31" Table, sn 52385

CHALLENGE JF Single Head Drill, 19" x 31" Table

CMC Round Cornering Machine, 10"x10" Tapered Table

(3) **CIRLOX** Machines

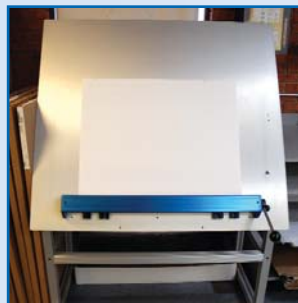
PRE PRESS DEPARTMENT



CREO PLATE MAKER, MODEL CRS TRENDSETTER 3244 S



KODAK POLYCHROME PROCESSOR, MODEL SWORD 34



NELA TURNS PLATE PUNCH



SRS PLATE PUNCH



**NEOLT TRIM UNIT
MODEL 130**



EPSON (CREO) STYLUS MODEL PRO 9600 PRINTER



VIEW OF LIGHT TABLES

PRE PRESS DEPARTMENT

- 2002 **CREO** Plate Maker, Model CRS Trendsetter 3244 S, 50" Capacity, 8 Up Unit, sn S202, Includes CREO PC & 2002 CREO Filter Model UDRC, sn DC485
- 2004 **KODAK** Polychrome Processor, Model Sword 34, 34" Capacity, Stacker, sn 583/NES3
- 2002 **EPSON** (Creo) Stylus Model Pro 9600 Printer, 40" Capacity, 7 Colour Cartridge, sn D920005859
- NELA** Turns Plate Punch, KPS, KOMORI Pins, 48"x40" Bed, sn EMP-0649-01
- NEOLT** Trim Unit Model 130, 54" x 10" Bed
- SRS** Plate Punch, Stripping, 42" x 36" Bed
- (2) Asst Light Tables By Henning & Craftsman 32"x45", 50" x 40"



TOWMOTOR ELECTRIC FORKLIFT, 2,100 LB CAPACITY



YALE 4,000 LB WALKIE LIFT TRUCK

PACKAGING

DAMARK Shrink Wrap Heat Tunnel, Model STR 16, 16" x 6", sn 3309

DAMARK L Bar Sealer, Model SMC 1620, 20" x 16", sn 3333

MATERIAL HANDLING

TOWMOTOR Electric Forklift, 2,100 lb Capacity, 3 Stage Mast, 42" Forks

MITSUBISHI 2,200 lb Reach Truck, Model HBR 10 S25 1300, Type E, 2 Stage Mast, 34" Forks sn 12190518

YALE 4,000 lb Walkie Lift Truck, Model MPB040-EN24T2748, sn B827N06011A

SUPPORT EQUIPMENT

Computer Dept with 2 **APPLE** G5 Computers

DELL Servers & Server Components, Rack Etc

LINOTYPE HELL, Model Topaz Flatbed Scanner, 12"x20" Bed

TRV-2 D5000 Reflection / Transmission Viewer

HAMMOND Lead Saw, Model BF10B, sn 13154

CHAMPION 5 HP Upright Air Compressor, AIRTEK Dryer

TRITON Air Technologies Filter

(3) 5,500 lb Capacity Pallet Jacks, Assorted Racking, Banding Carts, Assortment of Paper Supplies, Ink, Support Equipment, Executive Offices, Computers, Filing Cabinets, Desks, Chairs, Etc



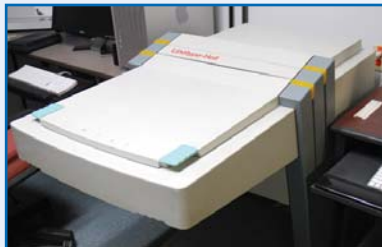
MITSUBISHI 2,200 LB REACH TRUCK



DAMARK L BAR SEALER & SHRINK WRAP HEAT TUNNEL



CHAMPION 5 HP AIR COMPRESSOR



LINOTYPE HELL, MODEL TOPAZ FLATBED SCANNER



TRV-2 D5000 REFLECTION / TRANSMISSION VIEWER

PROXY BIDDING

We will be happy to bid on your behalf if you are unable to attend our auction. Please call our office at 905-669-8893, or visit our website www.infassets.com to submit proxy bid.

Bid ONLINE at



TERMS OF SALE



Payment: All payments must be in Cash, Certified Funds, Visa, MasterCard or Interac, Wire Transfers or Company Checks must be accompanied with a bank letter guaranteeing irrevocable payment to Infinity Asset Solutions Inc.

A 2% surcharge will apply on all payments made by credit card.

All Online Bidders Must Register on Bidspotter By Monday December 12, 5pm.

A 13.5% buyers premium will be added to all onsite purchases (16.5% Online).

A \$500 refundable security deposit is required upon onsite registration (\$2,000 Online).

A 25% deposit is required at time of purchase, balance due by 4 pm, Wednesday December 14, 2011. **NO EXCEPTIONS.**

All goods are sold "As Is, Where Is", **ALL SALES ARE FINAL.**

All subject to prior sale. All Sales in Canadian Funds.

Complete terms and conditions including removal procedures, are available on our website, will be posted at the auction and will be provided at the time of registration.

REMOVAL TIMES

All Items By Thursday December 22, 2011. **Hours:** Monday – Friday between 8 am – 4 pm. No items may be removed during auction. **NO EXCEPTIONS.**

DIRECTIONS: From Toronto Airport To: 22 Export Avenue, St. Catharines, Ontario, Canada, L2M7P2. Approx: 109 km, 1 hr, 20 mins Exit airport, follow signs to 427 South / 401 W, merge onto Queen Elizabeth Way (Hamilton), Merge onto ON-403 W, follow signs for Niagara/East Hamilton/Fort Erie, Take the Niagara Street exit toward Welland Avenue, Keep left at the fork and merge onto Dunkirk Rd, Slight left onto Welland Ave, Turn right onto Export Ave, Destination will be on the left

HOTELS NEAR AUCTION SITE:

COMFORT INN	2 Dunlop Drive, St. Catharines	905-687-8890
HOLIDAY INN	327 Ontario Street, St. Catharines	905-688-2324
BEST WESTERN	2 North Service Road, St. Catharines	905-934-8000

This brochure is meant merely as a guide. Infinity Assets makes no guarantee, expressed or implied, as to the accuracy of the information in this brochure. Buyers should inspect the goods before-hand to satisfy themselves.

Member In Good Standing Of:



INFINITY Asset Solutions

**AUCTIONS • LIQUIDATIONS
FINANCING • APPRAISALS**



Like us at: [facebook.com/
Infinity-Asset-Solutions-Inc](http://facebook.com/Infinity-Asset-Solutions-Inc)



Follow us at: [twitter.com/
InfinityAssets](http://twitter.com/InfinityAssets)

63 Maplecrete Road, Concord, Ontario L4K 1A5 Canada
infassets.com • Tel: (905) 669-8893 • Fax: (905) 669-7512